



Malvern Circular Walk

1000ft >
Moderate

Map Sheet



Feedback to us ...
enquiries@wcrp.org.uk



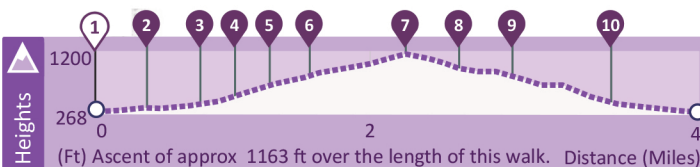
NORTH HILL

TABLE HILL

Lady Howard de Walden Drive
Green Valley

SUGARLOAF HILL

Mathon



Worcestershire
Community
Rail Partnership



Road/track	Route keypoints	Click for live link
Bridleway	Public house	Information
Footpath	Ascent/Descent	Landscape feature
	Picnic site	Cafe
	Viewpoint	Parking
	Take care!	Church

Map key

GPX for Apps

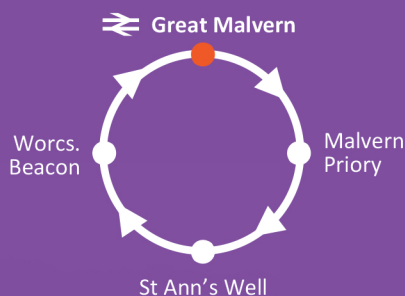
Scan or click me here.



Worcestershire Rail Network



The Cotswold & Malvern Line

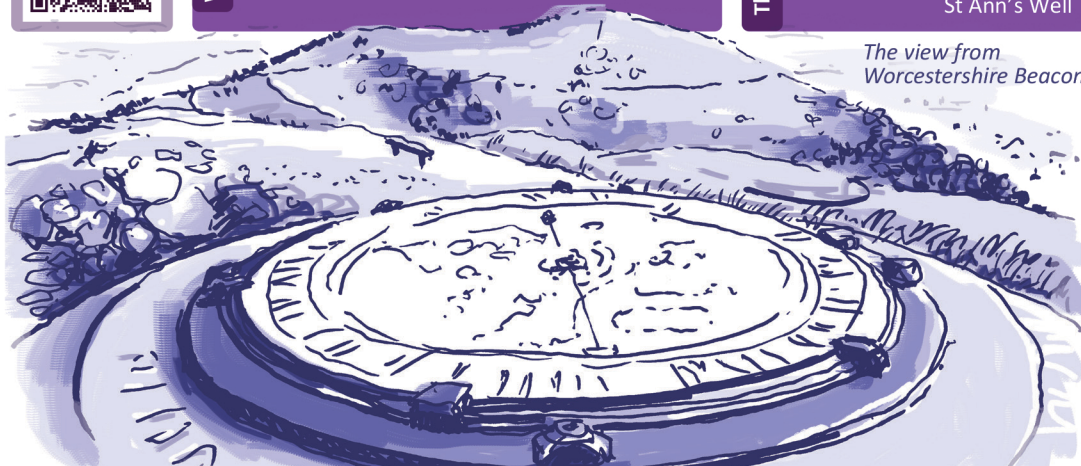


Train Times

Scan or click me here.



The view from
Worcestershire Beacon



Worcestershire Beacon

The Beacon is the highest point in Worcestershire, with a summit at 425 metres (1,394 ft).

It was part of the chain of fires lit to warn of the Spanish Armada's attempt to invade England in 1588.



Malvern Circular Walk

1000ft >
Moderate



Directions

Key L = Turn Left | R = Turn Right | FP = Footpath

1 From Platform 1 R onto the station car park then L up steps to continue R on tree lined path to cross roads. L up Avenue Road then 3rd L into Priory Road.

2 Cross R to Swimming Pool entrance then take path around the R side of the swimming pool and into Priory Park. Cross bridge over pool and continue past bandstand. Just before steps up to Malvern Theatres use paths in the park to pass L around the theatre and then R on Grange Road.

3 Just before the main theatre entrance cross L to take alleyway behind ornate metal panel to Great Malvern Priory. Cross L in front of Priory to take steps up and follow path between buildings and up a further set of steps to Wells Road.

4 Follow path to and then up a large flight of steps to a road. Enter Rose Bank Gardens. Follow path on then large flight of steps to climb up to road. Almost immediately opposite take surfaced track signed 'To The Hills'.

5 Follow this track as it climbs up to St

Ann's Well and Café. Continue on track around the L side of the Cafe to climb up to a flatter area.

6 Here L then almost immediately L again on a wide gravel track initially through trees. After a further clump of trees on the L double back R and continue to follow the most obvious track as it zig zags up the hill to the toposcope on top of Worcestershire Beacon.

7 From the toposcope continue L along the ridge to and then past the white trig point to take an obvious track that doubles back on the right. Follow this straight ahead as it contours around the summit to where several paths meet. Here L to descend steeply to a large round directional cairn at a col.

8 Continue straight ahead on the widest and best surfaced track (towards North Hill) with trees on the R. Where the trees end and a track crosses double back R to take track down through trees. (There's a stone sign to Great Malvern set low in the bank on the R just as you start descending on this track.

9 Continue down through trees to where a small flat green plateau appears and where tracks cross. (this is point 6 on the outward journey). L here to descend on a wide track then R at the next junction to continue on a surfaced track down Happy Valley. Just after the Donkey Shed on the L at a junction with St Ann's Road continue straight ahead and back into Malvern.

10 At the main road use the pedestrian crossing then R to follow the pavement down and gradually L into Church Street. Continue down through the traffic lights then take the next road R into Avenue Road. From the junction with Priory Road we retrace our outward route continuing down Avenue Road taking the third R into Imperial Road and back to the station.

St Ann's Well Cafe

St Ann's Well Cafe

Situated on the path leading up to the Worcestershire Beacon. The building, that dates back to 1813, houses the spring and Malvern water flows freely from an elaborately carved waterspout.

The Malverns

Malvern is a spa town in Worcestershire. It lies at the foot of the Malvern Hills, a designated National Landscape. The hills are formed of some of the most ancient rocks in England, and with their two Beacons, dominate the surrounding countryside.

The Toposcope on the summit of the Worcestershire Beacon is a viewfinder. On a clear day, the Lickey Hills, The Wrekin, Birmingham, Cannock Chase, the Welsh border mountains, the Shropshire Hills, the Cotswold Hills, the Bristol Channel, and the Cathedrals of Worcester, Gloucester and Hereford can be seen.

